

## HISTORIC WATERFRONT NEIGHBORHOOD IN CHELSEA

**2 BED • 2 BATH + LOFT • BI-LEVEL CONDO • \$499,000**

**PRIVATE DECK • GARAGE + PARKING • CATHEDRAL CEILINGS • GRANITE KITCHEN • LAUNDRY • A/C**

Jeffrey Bowen, Broker Associate • Lic.#9068834

617-729-2618 • 781-201-9488

jeffreybowen.com • youtube.com/jeffreybowen • info@chelsearealestate.com

eRealtyAdvisors



FRIDAY, NOVEMBER 28, 2025



FREE

# CHARLESTOWN

PATRIOT-BRIDGE

## D3 FALL CHAMPIONS



*Congratulations to the Charlestown Football Club (CFC) Men's over 40 team for winning the D3 Fall Championship in Lancaster this weekend. The team defeated Marblehead in penalty kicks to secure the cup and gain promotion to division 2 in the spring.*

## Enchanted Trolley Tour comes to Charlestown Dec. 7

Special to the Patriot-Bridge

Mayor Michelle Wu and the Mayor's Office of Tourism, Sports and Entertainment announced the dates for the 29th Annual Enchanted Trolley Tour. This year's Trolley Tour will visit 16 neighborhoods on Saturday, December 6 and Sunday, December 7.

"The annual Enchanted Trolley Tour is a beloved annual tradition

bringing families together across the city to kick off the holiday season. I can't wait to see everyone at this year's celebrations," said Mayor Michelle Wu. "I'm grateful for the support of all our partners who help carry out this joyful weekend each year."

The Mayor's Enchanted Trolley Tour will continue the festive tradition of holiday tree lighting and Santa visits throughout Boston's neighborhoods. This event

is presented by Bank of America, and supported by CityView Trolley Tours. The Enchanted Trolley Tour stops feature giveaways and visits from Santa, Mayor Wu, and Office of Neighborhood Services staff.

"The Enchanted Trolley Tour ushers in the holiday season in a way that only could happen in Boston, charming and delighting residents and visitors throughout a magical weekend," said Miceal Chamberlain, President, Bank of America Massachusetts. "Bank of America is proud to once again join Mayor Wu and the City of Boston in bringing the 2025 Enchanted Trolley Tour and tree lightings to neighborhoods across the entire city."

Enchanted Trolley Tour dates, times, and locations are as follows:

**Saturday, December 6**

11:00 a.m. — Hastings Lot, West Roxbury

2:00 p.m. — Hyde Square,

See TROLLEY Page 2

## Coletta Zapata highlights need for coordinated climate action plan

Special to the Patriot-Bridge

Councilor Gabriela Coletta Zapata chaired a public hearing to review the Wu Administration's draft 2030 Climate Action Plan. The hearing brought together senior City officials, environmental experts, advocacy organizations, and community groups to discuss implementation strategies, funding needs, and the plan's focus on climate justice. The Council heard from the Mayor's Office of Environment, Energy, and Open Space, including Chief Climate Officer Brian Swett, Director of the Office of Climate Resilience Christopher Osgood, and Boston Green New Deal Director Oliver Sellers-Garcia.

"Boston faces growing, immediate risks from heat island

effect, coastal flooding, and climate unpredictability. Our city is responding with essential climate action to confront these impacts and address long-standing environmental inequities," said Councilor Gabriela Coletta Zapata. "Now more than ever, we must ensure we are leading with coordinated, equity-driven climate strategies that protect our most vulnerable residents. The 2030 Climate Action Plan is a key example of this critical work, and I look forward to seeing the plan evolve with integrated feedback from experts, advocates, and the community."

Administration officials presented an overview of the draft plan's structure, its integration

(CLIMATE Pg. 3)

## ST. JOHN'S EPISCOPAL CHURCH'S ANNUAL HARVEST FAIR



DEREK KOUYOUMJIAN PHOTO

*In the kitchen chef Dan Spinetto brings a turkey out of the oven with his kitchen staff: Parish Organist Douglas Witt, "Church Lady" Catherine Womack, Skyler Moore, and Alice Krapf during the annual St. John's Episcopal Church annual Harvest Fair. See Pages 4 and 5 for more photos.*

## CNC MEETING DATES

**CNC General Meeting, Tuesday, December 2, 2025, 7 PM, Knights of Columbus**

The Charlestown Neighborhood Council will hold an in-person public meeting on Tuesday, December 2, 2025, from 7:00 PM to 9:00 PM at the Knights of Columbus, located at 545 Medford Street, Charlestown. Agenda items include presentations by Senator Sal DiDomenico on the proposed Everett soccer stadium and district updates, and by Eversource on the Charlestown Energy Project, including a planned new substation, infrastructure upgrades, and opportunities for community involvement. More information is available at [eversource.com/charlestownenergy](https://eversource.com/charlestownenergy).

Please bring your questions and neighborhood concerns to the meeting or email us at [cnc02129@gmail.com](mailto:cnc02129@gmail.com)



# EDITORIAL

## YOUNG MEN ARE PAYING THE PRICE FOR CASINOS ON OUR CELL PHONES

The evidence is clear that the rush by many state legislatures, including Massachusetts, to buy into the sports-gambling craze has had a hugely negative impact upon one group in particular -- young men.

When the Supreme Court struck down the federal ban on sports betting in 2018, Americans legally wagered less than \$5 billion on sports annually. Last year, they bet \$150 billion -- and 90% of those bets were placed on phones, not at casinos or racetracks, and more than half were so-called live bets, which are placed while the games are in progress.

This increase in wagering has come primarily out of the pockets of young men, who by any measure have become casualties of the sports-betting craze.

As the TV ads inform us, a person can open a betting app on their smartphone and find hundreds of options per game. This new generation of bettors is not merely wagering as to which team will win and the final point spread, but on minutiae such as whether the next pitch will be a ball or a strike -- in other words, they can bet throughout the game on every single thing imaginable.

One need not be an expert in addictive behavior to realize that making it this easy to place a new bet every minute (or even less) feeds into an insatiable desire to achieve the "high" of placing a bet -- a form of addiction to which the brains of young men are uniquely vulnerable.

One would have hoped by now that our state legislators would have realized the mistake they made and would repeal the law allowing betting on cell phones, and restrict sports gambling to casinos.

But the states themselves are now addicted to the tax revenue from the sports gambling industry, especially in this era of reduced funding from Washington. Our legislators have made a deal with the devil -- and young men and their families are paying the price.

## A VICTORY FOR MARRIAGE EQUALITY

Advocates of marriage equality breathed a sigh of relief last week when the U.S. Supreme Court refused to take up a request that it consider overturning its 2015 landmark decision, *Obergefell v. Hodges*, in which the court ruled that the fundamental right to marry is guaranteed to same-sex couples under the Constitution.

The *Obergefell* decision, which was decided by a narrow 5-4 majority, requires all 50 states (plus the District of Columbia) to recognize the marriages of same-sex couples equally with the marriages of opposite-sex couples.

Prior to the court's *Obergefell* ruling, it had been left up to each state to determine whether to issue marriage licenses to same-sex couples (Massachusetts was the first state to do so in 2006). However, those marriages were not recognized federally, which meant that couples could not file joint federal tax returns or enjoy any of the other rights and privileges of marriage.

The majority opinion in *Obergefell*, written by Justice Anthony Kennedy, put it very simply: "Marriage is a keystone of our social order and there is no difference between same- and opposite-sex couples with respect to this principle."

However, the make-up of the Supreme Court has changed greatly over the past 10 years. Judge Kennedy has retired and the three judges appointed by President Trump during his first term, Neil Gorsuch, Amy Coney Barrett, and Brett Kavanaugh, all had expressed opposition to legalizing gay marriage throughout their legal careers prior to their appointments to the Supreme Court.

Given those changes, marriage equality advocates had feared that the court might reconsider its ruling in *Obergefell*. In addition, Justice Clarence Thomas had suggested in his concurring opinion in the *Dobbs* case (which overturned *Roe v. Wade*) that *Obergefell* also should be scrutinized.

The case that came up to the court was a petition filed by the former Kentucky county clerk who gained national attention in 2015 when she defied a court order and refused to issue same-sex licenses because of her religious beliefs.

She had asked the Supreme Court to reverse an order that required her to pay more than \$300,000 in attorney's fees to a couple for whom she had denied a marriage license and to overturn the *Obergefell* decision.

At least four of the nine justices were needed to vote to hear the case and revisit the same-sex marriage precedent. However, the court refused to take it up, thereby allowing a lower court ruling that had dismissed the former clerk's case to stand.

Although the former county clerk's attorney said in a statement that he would continue his efforts to overturn *Obergefell*, it seems clear that marriage equality, which today enjoys broad public support, is here to stay -- and that's good news for all Americans.

## Shop Small Stroll in Charlestown

### Promoting Small Business Saturday November 29

Small Business Saturday, celebrated on November 29, is an annual shopping event founded by American Express in 2010 to encourage consumers to shop at small, local businesses during the holiday season. An event co-sponsored by the U.S. Small Business Administration since 2011, officials from the SBA Massachusetts District Office are strolling through Charlestown's Main Street -- highlighting the importance to SHOP SMALL.

The U.S. Small Business Administration makes

the American dream of business ownership a reality. As the only go-to resource and voice for small businesses backed by the strength of the federal government, the SBA empowers entrepreneurs and small business owners with the resources and support they need to start, grow, or expand their businesses, or recover from a declared disaster. It delivers services through an extensive network of SBA field offices and partnerships with public and private organizations. To learn more, visit [www.sba.gov](http://www.sba.gov).

## Public Invited to USS Constitution's Annual Tree Lighting Ceremony

The public is invited to attend USS Constitution's annual Tree Lighting Ceremony on Friday, December 5, beginning at 3:00 p.m.

This free event will include a visit from Santa Claus with photo opportunities, holiday music, ship tours, and remarks from the ship's commanding officer.

Boarding of USS Constitution will begin at 3:00 p.m., and the event will conclude at 5:30 p.m. All guests age 18 and older must present a valid state or federal photo ID or passport to board.

Guests will also have the opportunity to witness evening colors, the ceremony marking the

lowering of the American flag at sunset, scheduled for 4:12 p.m.

The tree-lighting ceremony will follow evening colors, with additional opportunities for photos with Santa Claus immediately afterward.

USS Constitution is open for free public visitation Wednesday through Sunday, from 10:00 a.m. to 4:00 p.m.

As the world's oldest commissioned warship afloat and America's Ship of State, USS Constitution played a vital role in the Barbary Wars and the War of 1812, safeguarding American sea lanes from 1797 to 1855.

### TROLLEY (from pg. 1)

#### Jamaica Plain

3:00 p.m. — J.P. Monument, Jamaica Plain  
3:45 p.m. — Brigham Circle, Mission Hill  
4:30 p.m. — Bolling Building, Roxbury  
5:45 p.m. — Blackstone Square, South End

#### Sunday, December 7

2:00 p.m. — M Street Park, South Boston  
4:00 p.m. — Paul Revere Mall, North End  
5:00 p.m. — Winthrop Square (the Training Field), Charlestown  
6:15 p.m. — Maverick Square, East Boston

The Mayor's Office of Tourism, Sports, and Entertainment supports the tourism industry in Boston by producing events, supporting film, and TV production, and marketing the city to conventions and visitors. Their mission is to advance tourism in Boston and promote participation in public celebrations from Boston residents and visitors. For more information, visit [boston.gov/tourism](http://boston.gov/tourism) or follow the department on social media @VisitBostonCity.



**CHARLESTOWN**  
PATRIOT-BRIDGE

THE CHARLESTOWN PATRIOT-BRIDGE,

PHONE: 781.485.0588 © 2008 INDEPENDENT NEWSPAPER GROUP.

EMAIL: [editor@charlestownbridge.com](mailto:editor@charlestownbridge.com) • WEB SITE: [www.charlestownbridge.com](http://www.charlestownbridge.com)

NEWSSTAND PRICE: FREE / SUBSCRIPTION PRICE: \$75 ANNUALLY

PRESIDENT - STEPHEN QUIGLEY - EDITOR@CHARLESTOWNBRIDGE.COM

MARKETING DIRECTOR - DEBRA DIGREGORIO - DEB@REVEREJOURNAL.COM

# MFA Artisan Market returns, celebrating handcrafted community

By Eva Mazzara

As friendly faces gathered and amber afternoon sunlight streamed into the Shapiro Family Courtyard in Boston's Museum of Fine Arts on a recent Saturday afternoon, a community bound by a passion for art began to take shape.

"There's so many big-box stores, and chain(s) (stores), that just (don't) have soul," said Sue Fish, 65, owner of Women's Peace Collection, one of the market's 12 vendors who set up shop at the museum's Artisan Market. "I think that when you have hand-made goods, it really does bring a sense of community because it's special, it's unique, it's creative."

The Artisan Market attracts designers from diverse backgrounds to a central courtyard in the museum each year, where they sell items such as handcrafted jewelry, intricately designed clothing and other eclectic pieces. The event last month was the first since COVID-19.

Fish discovered her love for fair trade — a partnership between

companies in developed countries and producers in developing countries — after graduating from Tufts University in 1982 and spending six memorable months in Peru. After returning to the U.S., Fish studied to become a therapist, a career that spanned 35 years. However, her time in Peru and the lingering idea of working with international artisans never faded. Fish bought the Women's Peace Collection in 2014, a business that sells products such as alpaca hats, gloves, cashmere wraps, scarves and baskets.

Fish works with marginalized international communities, including silversmiths in Bali, who have been practicing their art form for generations. She says she remains involved in the creative process by making frequent trips to the Indonesian island.

"One of the things we love about fair trade is the story," Fish said. "Like, we know these people in Bali, they're family to us. They're the nicest people I've ever met."

The Artisan Market debuted

in 2017 and ran annually until COVID-19 forced its closure in 2020, according to Ellen Bragalone, the museum's director of retail. The market is operated in conjunction with Bragalone's fashion and textile buyer, a position that has been vacant since the pandemic.

"I just recently got it (the job) filled, so we decided to bring back the Artisan Market," she said. "It's always been very successful, so we really wanted to start it up again."

Centered squarely in the middle of the museum, the courtyard provides a space for vendors to showcase their pieces, and room for customers to browse.

More than 5,200 people visited the museum on a recent Saturday for the Homer exhibition and other displays, and many of them stopped by the market. Sarah Basu, a customer and local artist, hopes the market will be a recurring event.

"There's a possibility, but we're trying to work out the details on that," said Bragalone. "It may

happen. I can't confirm it, but it might."

When it comes to choosing vendors, Bragalone tries to assemble a marketplace that features a variety of price points, and a diverse range of goods. "That's why we tried to make sure that everybody had a very different look and feel to what they were selling," she said. "That's important for us."

The market's appeal lies mainly in its originality, said Jan Chen, a Newton therapist, as she browsed the tables recently.

"You cannot necessarily find exactly the same thing online," said Chen, showing off her newest purchase — a chunky necklace filled with anomalous designs and vivid, alternating colors.

Some vendors' businesses are new. Michelle Yozzo Drake, owner of Stonington Designs, had always enjoyed painting, but her career as an assisted living executive director occupied most of her time.

Drake left her job to care for her mother. When it was time to return to work, her husband sug-

gested a different idea. "And that's why I'm 64 years old ... doing this," she said. As Stonington Designs blossomed, Drake started a military spouse weaving program that provides jobs for stay-at-home mothers. "My son is an Air Force pilot," she said, "and I understand the struggle that the military families have."

Stonington Designs just released its newest collection, America 250, to celebrate the country's semiquincentennial birthday.

Art resonates differently for every person. Basu believes the appeal of artistic creativity is universal, and that's one of the reasons the Artisan Market works.

"The pieces are unique, and it really helps give ... locals a way to show their work," she said, "especially (during) a busy time like today."

*Eva Mazzara is a student in the Boston University Journalism program. This story is a partnership between Beacon Hill Times and the Boston University Journalism program.*

## CLIMATE (from pg. 1)

of greenhouse-gas reduction and resilience strategies, and its new climate-justice metrics. They highlighted the Mayor's Climate Council, cross-department coordination, and the forthcoming second draft planned for February. Officials noted that buildings remain the largest source of emissions, and that the City is prioritizing coastal protection, extreme heat mitigation, and community-informed climate solutions.

Environmental and community leaders provided testimony on the urgency of implementation, equitable investment, and the need for long-term funding strategies. Organizations that testified included the Green Ribbon Commission, Vicinity Energy, Boston Climate Action Network (BostonCAN), Alternatives for Community and Environment (ACE), UMass Boston's Stone Living Lab, and Boston Harbor Now.

Panelists emphasized transparent governance, clear metrics, expanded community partnerships, and funding mechanisms capable of supporting Boston's 47 miles of coastline. They also discussed the role of nature-based solutions, workforce pathways with prevailing-wage standards, the need for regional collaboration, and the importance of align-

ing large institutions and private partners with municipal resilience efforts. Experts stressed the urgency of protecting vulnerable coastal areas and evacuation routes by 2030. Boston Harbor Now and the Green Ribbon Commission outlined current work on funding and financing roadmaps, including nature-based strategies and regional cooperation for shoreline protection.

Councilors and community organizations underscored the disproportionate climate burdens facing neighborhoods such as East Boston, Chinatown, Roxbury, Dorchester, and Mattapan. Testimony highlighted the need for equitable distribution of green infrastructure, expanded tree canopy, clean-energy access, and anti-displacement safeguards as improvements are implemented.

BostonCAN and ACE emphasized strong community support for building electrification, energy-efficiency programs, and local renewable-energy solutions, particularly home retrofits in high-heat and basement-unit communities. The Administration discussed the Boston Energy Saver program and upcoming net-zero carbon zoning.

Across the panels, speakers reinforced the need for new, sus-

tained revenue sources, especially given the loss of federal funding for coastal resilience. Models discussed included municipal climate financing tools, state and federal partnerships, green bonds, and other revenue mechanisms.

The Administration will continue incorporating community

feedback and anticipates releasing the next draft of the Climate Action Plan in February, including strengthened metrics, dashboards, and identification of delivery partners. The Committee will continue to monitor implementation, budget alignment, and equitable distribution of benefits as the plan

advances.

For additional information please contact the Office of Councilor Gabriela Coletta Zapata by phone at (617) 635-3200 or by email at gabriela.ramirez@boston.gov.



City of Boston  
Landmarks Commission



City of Boston  
Mayor Michelle Wu

## MONUMENT SQUARE LANDMARK DISTRICT

### STUDY COMMITTEE OUTREACH AND MEETINGS:

*The Study Committee will identify the historic, architectural and archaeological significance of the resources located in the proposed district, and finalize the proposed district's boundaries. Current and future planning issues will be reviewed and discussed to formulate recommendations to preserve the unique historic character of the Monument Square neighborhood while encouraging contextually sensitive new development in appropriate areas.*

**Meeting: December 3 @ 6:30pm - Virtual:**

<https://www.zoomgov.com/j/1613185522>

(Meeting ID 161 318 5522)

**Meeting: December 17 @ 6:30pm - Virtual:**

<https://www.zoomgov.com/j/1613171668>

(Meeting ID 161 317 1668)

**Meeting: January 14, 2026 @ 6:30pm - Virtual:**

<https://www.zoomgov.com/j/1603630588>

(Meeting ID 160 363 0588)

All listed events are open to the public.

For more information visit: [www.boston.gov/monumentsquare](http://www.boston.gov/monumentsquare)

Visit [www.charlestownbridge.com](http://www.charlestownbridge.com)



## ST. JOHN'S EPISCOPAL CHURCH HOLDS ANNUAL HARVEST FAIR



*Shannon Fry was in command of the bake sale.*

St. John's Episcopal Church held its annual Harvest Fair. The event was open to everyone as guests came to enjoy a pre-Thanksgiving turkey dinner, a craft fair, and relaxing with neighbors.



*Upstairs at the craft fair Liz, Cristhy, and Andre offer visitors art made by the kids in Turn It Around.*



*St. John's Parish House welcomed many guests to enjoy a turkey dinner for the Harvest Fair.*



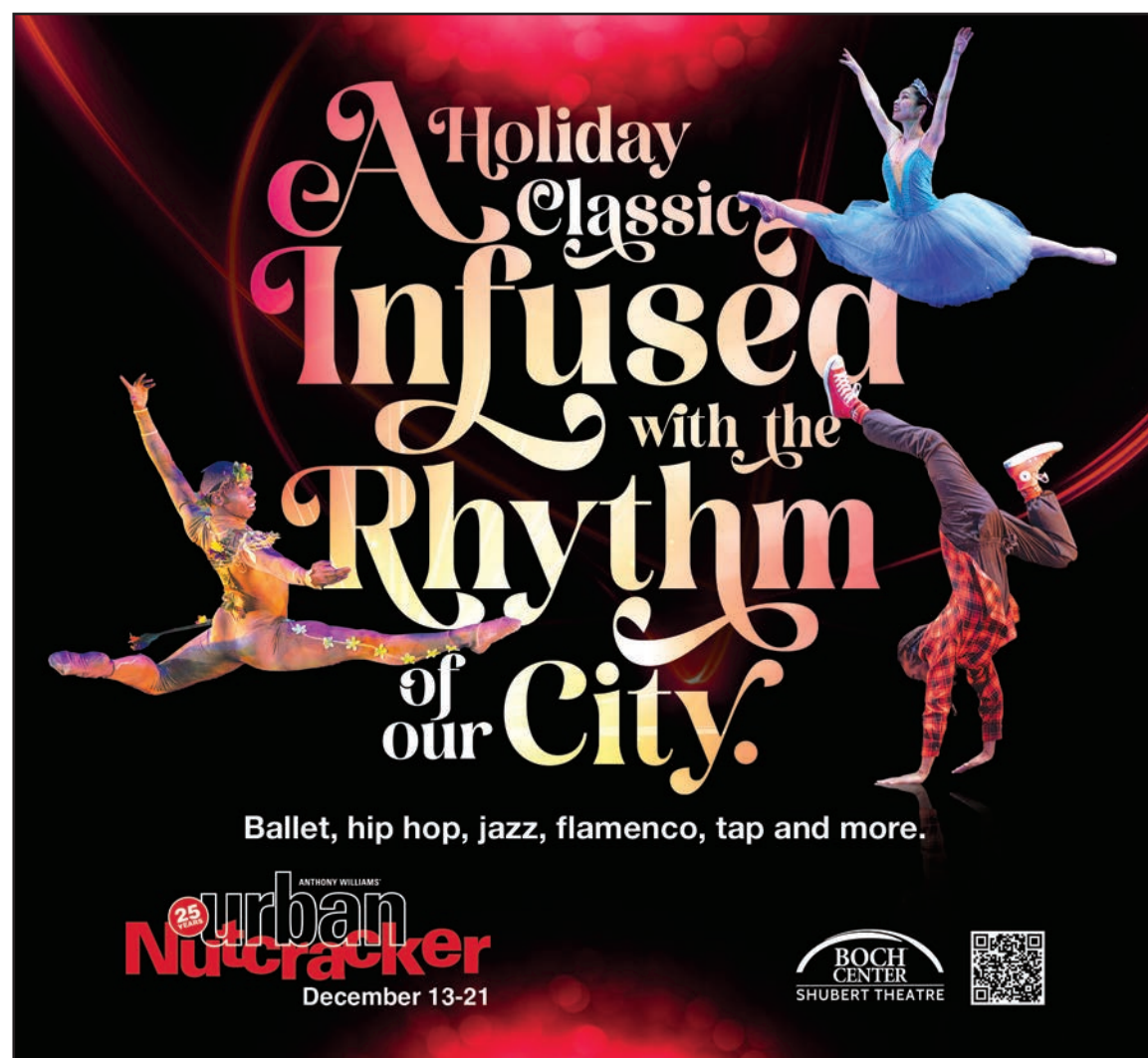
*Volunteer Kristin Lynch served up slices of pies that were baked at the Parish House.*



*Members of Charlestown Community Cares, an organization that has distributed donations of clothing, furniture, and other home necessities to those in need for over three years now.*



*Wait staff Nora and Hadley were happy to help everyone get their meals quickly.*





ST. JOHN'S EPISCOPAL CHURCH HOLDS ANNUAL HARVEST FAIR

DEREK KOUYOUMJIAN PHOTOS



St. John's Parish House welcomed many guests to enjoy a turkey dinner for the Harvest Fair.



Dorothy Smith took some turkey dinners home for her family to enjoy.



Maureen Lavelly and Jane Struss greeted guests to the Parish House for the Harvest Fair.



St. John's Parish House welcomed many guests to enjoy a turkey dinner for the Harvest Fair.



Abby and Nate Bresler were a solid team of servers. Nate was acclaimed by the guests from his work last year and his sister Abby wanted to help this year.



Rector Greg Johnson with Jen DiManno, Matthew Hast, and their wait staff are ready to start this year's Harvest Fair.



St. John's was proud of its Wolcott Cutter Memorial Garden renovated earlier this year thanks to a grant from the Community Preservation Act.

Visit  
**HOOD PARK**

the handle bar

TRADESMAN

sunnyside

@the yard

ELEMENT SALON AND SPA

BOSTON VETERINARY CLINIC

URBAN WILD

LANDRY'S BICYCLES

Lucky Tiger

Henry Bears Park

Open 7 Days a Week • 3-HR FREE Parking • Corner of 500 Rutheford & Hood Park Drive • BlueBikes & Racks



**FREE HOLIDAY CONCERT**

**St. Mary–St. Catherine of Siena, and  
Friends of the Charlestown Library Present**

**The Beatrice MasterSingers**

**3:00 December 7<sup>th</sup>, at St. Mary's Church, 55 Warren Street**  
**(617) 242-4664   handicapped accessible   [www.stmarystcatherine.org](http://www.stmarystcatherine.org)**



## Two worlds on the same street: How a violin bridges Beacon Hill with the unhoused community

By Milena Fernsler

In the small, dimly-lit community center turned chamber hall on 74 Joy St., Jennifer Stevens is brought back to her grandparents' living room. There, she would watch the piano strings dance as her great uncle played. Sometimes she sat beneath the baby grand, enveloped in the amplified acoustics of the instrument's underbelly.

"That was my playground," she said.

The benefit concert held on Oct. 15 for Shelter Music Boston, performed by the organization's artistic director and internationally-acclaimed violinist, Adrian Anantawan, aimed to provide Stevens' experience to the thousands of homeless people living just outside the cozy confines of Beacon Hill.

More than 5,500 people live without shelter in Boston, according to the 2025 U.S. census.

"For many people, connecting them to music, particularly classical music, brings them back to a simpler time, when life was less complicated," said Mark Lippolt, who works for the organization's development committee.

Now celebrating its 15th anniversary, Shelter Music Boston will perform more than 100 free concerts this year at shelters for homeless people, those recovering from substance abuse, or fleeing domes-



Violinist Adrian Anantawan.

tic violence.

"Classical music unfortunately can be seen as something that's very ivory tower, and only for people who can afford it," said violinist Anantawan, who was born without a right hand. Whether life's challenges stem from a disability or other circumstances, the Canadian musician says the stigma is the same.

"That's always been a big mission for me," Anantawan said, "to be able to find ways that this particular art form can be accessible and inclusive for as many people as possible, and to try to remove the stigma of what or who this music is for."

At 10 years old, Anantawan's elementary school required stu-

dents to pick up the recorder. With only five fingers, that simply wasn't an option, and he and his parents began searching for a more suitable instrument. Anantawan found his calling on a Sesame Street episode featuring violin virtuoso Itzhak Perlman. It was the first time the aspiring musician saw someone on TV who somewhat resembled him.

"He had polio, a disability as well, but played the instrument beautifully," Anantawan said. He told his parents he'd made his choice.

With the aid of a prosthetic adapted to hold his bow, Anantawan has now played all around the world, from the White House to the Athens and Vancouver Olympics. He has performed for Pope John Paul II, the late Chris-

topher Reeve and the Dalai Lama.

Amidst his piling accolades, Anantawan partnered with a hospital and after-school program to make chamber music accessible to children with disabilities. Now he says he hopes to bring his local, disadvantaged community the same sense of fulfillment he found through the violin.

When Shelter Music Boston plays for homeless communities, Anantawan said musicians are not only performing, they are pronouncing the audience worthy of beautiful music.

The night of the concert in Beacon Hill, Anantawan and his piano accompanist, Jennifer Hsiao, played a lullaby by the Indian American composer, Reena Esmail. Some audience members closed their eyes, others swayed to the melody. When the song ended, Anantawan opened the floor to a discussion, and attendees shared feelings evoked by the performance.

In a neighborhood where the average home value exceeds \$1 million, Anantawan said that night's conversation reminded him of audience reactions at shelters.

"All of us come from a parent or a family, and our hope is that the music that we continue to play really resonates with you as much as someone in a shelter," Anantawan said to the audience.

Even though classical music was first composed for kings and

queens, he said, "they were getting at very human elements that can be accessible to any of us."

Anantawan said he hopes the opportunities afforded by affluence isn't lost on Beacon Hill's residents. "What do we do to be able to make sense of that privilege?" he asks. "And what do you do as responsible members of the community to be able to uplift and to see all people as whole people?"

The evening closed with a three-part sonata by the French composer Claude Debussy, a piece that blends a disparate array of styles and techniques. The bow drew out the ethereal first act, abruptly followed by the sinister, dance-like rhythms of the second. The violinist and accompanist suspend the musical tension for more than 10 minutes before taking a breath in sync, releasing the final act's rapid triumph.

"You're really getting a sense of the work that we do here," Anantawan said, addressing the audience. "Which is, essentially, the human universal work of just making spaces beautiful and making our worlds as beautiful as we can through this power of art and music."

*Milena Fernsler is a student in the Boston University Journalism program. This story is a partnership between Beacon Hill Times and the Boston University Journalism program.*

To place a  
memoriam please  
call 781-485-0588

### OBITUARIES

All obituaries and death  
notices will be at a cost of  
\$195.00 per paper.

Includes photo.No word Limit.

Please send to  
obits@reverejournal.com  
or call 781-485-0588

## Isabella Stewart Gardner Museum presents Holiday Music in the Courtyard 2025

Special to the Patriot-Bridge

The Isabella Stewart Gardner Museum reimagines the traditional holiday concert with its Holiday Music in the Courtyard celebration, from 6–9pm on Wednesday, December 3. The performance will take place in the Gardner Museum's famed Courtyard, while guests are invited to watch from the surrounding galleries, strolling through the Museum to take in the music from every angle. (Please note, this is not a seated concert.)

Led by George Steel, Abrams Curator of Music, this immersive evening will showcase music from across four centuries, celebrating a variety of cultures' winter traditions. The performance features the acclaimed Vox Vocal Ensemble and the all-star American Brass Quintet, with opportunities

for everyone to sing along with familiar carols.

Additionally, coinciding with the Gardner Museum's current exhibition Allan Rohan Crite: Urban Glory and taking a cue from Crite's work "Three Spirituals From Earth To Heaven," on view in the exhibition, the Boston Arts Academy Spirituals Ensemble led by Michael W. Bradley will perform several selections.

The music and sing-along will run from 7–8 pm, and ticket holders can come early at 6 pm or stay late until 9 pm to enjoy the Museum galleries, shop at Gift at the Gardner, or purchase treats from Café G's holiday menu of small plates and cocktails/mocktails.

Visible from virtually any gallery in the Palace, the Courtyard is the heart and soul of the Gardner Museum, with changing horticultural displays throughout the year.

In December, the festive garden features dark forest greens and shades of red and silver including masses of flowering jade trees, silver dusty miller, green aloe, and the dark red winter blooms of amaryllis, creating a magical setting for Holiday Music in the Courtyard.

George Steel's music programming for the Museum continues founder and legendary arts patron Isabella Stewart Gardner's vision of bringing together musicians and audiences for inspiring gatherings. Dating to 1927, the Gardner's Weekend Concert Series is the longest running museum music program in the country. Much like Isabella Stewart Gardner did in her time, Steel champions unknown repertoire and embraces new works, creates connections



# NEW Health distributes over 200 Thanksgiving meals to community

Special to the Regional Review

The community health center NEW Health hosted its annual meal packing and complimentary distribution of Thanksgiving meals to enjoy this season at both its North End and Charlestown sites. Coldwell Banker is generously sponsoring this year. In total, more than 200 to-go meals were distributed.

Community members and patients had an opportunity to sign up in advance at the health center. The meals included traditional favorites such as turkey, mashed potatoes, gravy, assorted vegetables, stuffing, cranberry sauce and a slice of pie.

NEW Health's Food Access



Program, serving both its North End and Charlestown sites, was established in 2016. NEW Health is Charlestown's first full-service health center and is committed to improving the quality of health and life for its over 5,000 patients in the neighborhood. The health center continues to increase their food insecurity efforts to help families in need with the help of the community.

NEW Health is also conducting a food drive through Nov. 30

that anyone can donate to and also continues its monthly complimentary produce distributions of a variety of fresh fruits and vegetables to Charlestown and North End patients; patients are referred to the program via their primary care providers. Produce distributions take place monthly at the Charlestown site (upcoming dates are November 24 and December 22) and by delivery in the North End (November 21 and December 19).



## Project Bread welcomes Eva Millona and Sylvia Perry to its Board of Directors

Special to the Patriot-Bridge

Project Bread, the leading statewide food security nonprofit in Massachusetts, is pleased to announce the appointment of two new members to its Board of Directors: Eva Millona, Foundation Fellow at Eastern Bank Foundation and Visiting Fellow at the Harvard Graduate School

of Education, and Sylvia Perry, DNP, MS, ANP-BC, a Nurse Practitioner at Mass General Brigham. Project Bread's Board of Directors is a group of professionals who provide governance, expertise, and strategic support to advance the organization's mission to ensure every person in Massachusetts has

See PROJECT BREAD Page 15



Eva Millona



Sylvia Perry



City of Boston  
Planning  
Department

# Virtual Public Meeting

## HOOD PARK

**Register:**  
[bosplans.org/HoodPark-IAGPublic120125](https://bosplans.org/HoodPark-IAGPublic120125)  
**Toll Free:** (833) 568 - 8864  
**Meeting ID:** 160 194 1643



**DEC 1**  
**6:00 PM - 8:00 PM**

The Planning Department is hosting a Virtual Joint Impact Advisory Group (IAG) Meeting and Public Meeting to discuss the proposed project located at 15 Supertest Street in the Charlestown neighborhood of Boston. The purpose of the meeting is to provide updates to the community on the project. The meeting will include a presentation followed by a block of time for Q&A from the members of the IAG, and a block of time for Q&A for the public.

As part of the development review process, IAG members work closely with Boston Planning Department staff to identify the impacts of a project and recommend appropriate community benefits to offset those impacts. IAG meetings prioritize discussion between the project proponent (i.e. the developer) and IAG members. This meeting will include both this discussion as well as an opportunity for comment from the public.

**Website:**  
[bosplans.org/15supertest-st](https://bosplans.org/15supertest-st)

**Mail to:**  
**Sarah Peck**  
Planning Department  
One City Hall Square, 9th Floor  
Boston, MA 02201  
617.918.4282  
[sarah.peck@boston.gov](mailto:sarah.peck@boston.gov)

[BostonPlans.org](https://BostonPlans.org) | [@BostonPlans](https://twitter.com/BostonPlans)

Teresa Polhemus, Executive Director/Secretary



CHARLESTOWN GIRLS SOFTBALL LEAGUE HOLDS AWARDS CEREMONY

Charlestown Girls Softball League celebrated the efforts of its players, coaches, and their families with an awards ceremony at the Knights Of Columbus Hall last week. Each team group had specific players recognized for Most Improved Player, Best Sportsmanship, Unsung Hero, MVP, and a new category: The Blue Diamond Award to recognize a player exhibiting enthusiasm, team contribution, attendance, leadership, and more. Great work as always girls!

More photos on Pages 12 and 13

DEREK KOUYOUMJIAN PHOTOS



Spring 12U Navy Team



14U Championship Team



14U Championship Team



8U Instructional Team



Summer 10U Team



10U Championship Team

To all of the Charlestown Girls Softball PLAYERS

Congratulations!

on an awesome season!

From coaches, families, volunteers and sponsors.

To help us with a year end donation, please email for more information: [charlestowngirlssoftball@gmail.com](mailto:charlestowngirlssoftball@gmail.com)





CHARLESTOWN GIRLS SOFTBALL LEAGUE HOLDS AWARDS CEREMONY

DEREK KOUYOUMJIAN PHOTOS



12U Fall Team



Spring 8U Columbia Team



18U Fall Championship Team



Spring 8U White Team



Spring 10U Columbia Team



Spring 10U White Team



Winter 14U Team



Spring 12U Columbia Team



# MBTA announces December service changes

Special to the Patriot-Bridge

The MBTA has announced service changes in December on the Orange and Green lines.

Riders can find more information on service changes through in-station signage, in-station public announcements, and at [mbta.com/PlannedWork](http://mbta.com/PlannedWork). Transit Ambassadors and MBTA staff will be available on-site to offer information and assistance during these service changes. Riders are encouraged to subscribe to T-Alerts or to follow the MBTA on X @MBTA, @MBTA\_CR, and @MBTA\_CR\_Alerts for up-to-date service information.

## On the Orange Line

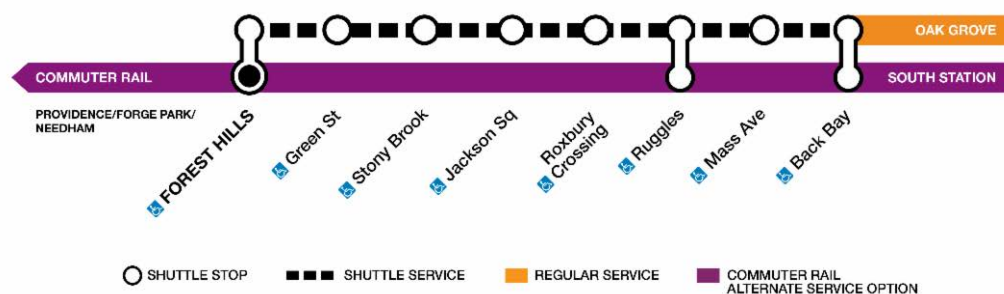
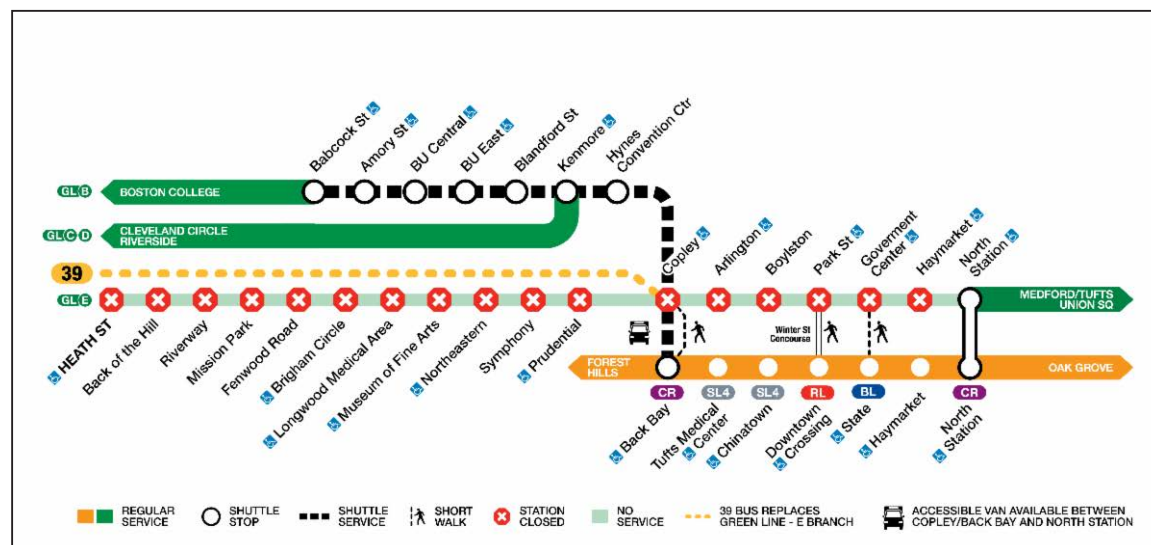
The MBTA will continue signal upgrade and modernization work on the Orange Line in December. By upgrading and modernizing its signals, the MBTA will significantly increase operational efficiency and improve scheduling reliability for riders. The MBTA will also maximize access to closed stations by performing cleaning, signage replacement, plumbing repairs and pump room work, and window replacement throughout the shutdown area as well as preparations for column work at Mass. Ave.

To accomplish this work, the following service suspensions will take place:

Orange Line service will be suspended between Back Bay and Forest Hills all day on Friday, December 5, and all day on Saturday, December 6. Regular Orange Line service will operate on Sunday, December 7.

Free and accessible shuttle buses will make stops between Back Bay and Forest Hills.

Riders are also encouraged to consider the Commuter Rail for fare-free service between Forest Hills, Ruggles, Back Bay, and



South Station. The trip between Forest Hills and Back Bay on the Commuter Rail is approximately 10 minutes.

Riders using shuttles bus service should budget ample extra travel time. For example, a rider traveling to Downtown Crossing from Forest Hills should budget at least an additional 30 minutes of travel in addition to their regular commute.

## On the Green Line

The MBTA will perform work in December to replace the wooden overhead catenary wire "trough" in the Green Line tunnel, which is original to the tunnel's construction in the late 1890s. The trough houses the Green Line's overhead wires and will be replaced with a modern, more durable, metal trough. With unencumbered access to the underground Green Line track areas, a number of

other projects will also perform work, including Green Line Train Protection System installation, signal modernizations, tunnel inspections, station brightening work, and more.

The wooden overhead catenary trough – seen here at Park Street – dates back to the late 1890s and will be replaced with a modern, more durable, metal trough.

To accomplish this work, the following service suspension will take place:

Green Line service will be suspended between North Station and Babcock Street on the B Branch, Kenmore on the C and D Branches, and Heath Street on the E Branch for 15 consecutive days, December 8 – 22.

Riders using shuttles bus service should budget ample extra travel time. For example, a rider traveling to Park Street from Boston College should budget at least an additional 20 minutes of travel in addition to their regular commute.

B Branch: Free and accessible shuttle buses will operate between Babcock Street and Back Bay.

Riders can connect to the Orange Line at Back Bay for continued service through downtown toward North Station.

There will be free fares at Kenmore with the fare gates open. Fares will also be free at all surface-level stops west of Kenmore.

Route 57 bus service will be fare-free during this service change.

C Branch: Free and accessible shuttle buses will operate between

Kenmore and Back Bay.

Riders can connect to the Orange Line at Back Bay for continued service through downtown toward North Station.

There will be free fares at Kenmore with the fare gates open. Fares will also be free at all surface-level stops west of Kenmore.

D Branch: Free and accessible shuttle buses will operate between Kenmore and Back Bay.

Riders can connect to the Orange Line at Back Bay for continued service through downtown toward North Station.

There will be free fares at Kenmore and Riverside with the fare gates open. Fares will also be free at all surface-level stops west of Kenmore.

E Branch: Route 39 will replace Green Line E Branch service between Heath Street and Back Bay. Extra buses will be added to the 39 to accommodate additional capacity. The route will be fare-free during this service change.

Accessible van service will be available for Green Line stops between Copley/Back Bay and North Station.

The Worcester Commuter Rail Line will be fare-free between South Station, Back Bay, and Lansdowne during this Green Line service change. Riders should note that regular fares should be purchased beyond Lansdowne and regular fares should be purchased if traveling on a Commuter Rail line other than the Worcester Line.

The MBTA previously announced service changes in November. More information is available here.

For more information, visit [mbta.com/PlannedWork](http://mbta.com/PlannedWork) or connect with the T on X @MBTA and @MBTA\_CR, Facebook /TheMBTA, Instagram @theMBTA, Threads @thembta, or TikTok @thembta.



The wooden overhead catenary trough – seen here at Park Street – dates back to the late 1890s and will be replaced with a modern, more durable, metal trough.

Shop

LOCAL

**Business directory**

Our readers are always seeking local resources.

Call for a great rate on a long term  
COLOR campaign for your business.

Sioux Gerow

[charlestownads@hotmail.com](mailto:charlestownads@hotmail.com)

781-485-0588 x106



## City of Boston to host 5<sup>th</sup> annual Ship Lighting At Martin's Park on Nov. 29

Special to the Patriot-Bridge

Boston's newest holiday tradition will be held on Saturday, November 29, from 5-6 p.m. in Martin's Park at the Smith Family Waterfront. Located in the Seaport District and Fort Point neighborhoods, this fourth annual children's celebration is hosted by the Friends of Martin's Park and the Boston Parks and Recreation Department.

Located at 64 Sleeper Street, Martin's Park at the Smith Family Waterfront is a climate-resilient park built in memory of eight-year-old Martin Richard, the youngest victim of the 2013 Boston Marathon bombing. The accessible park provides play opportunities for children, families, and visitors of all abilities.

The Park's wooden playship is the centerpiece of the space and will be transformed into a beautiful holiday display when the ship,

surrounding fencing, and pedestrian bridge are illuminated with over 7,600 feet of white and blue LED lights.

Visitors are encouraged to head inside the park for the celebration, sponsored by the Friends of Martin's Park and the Boston Parks and Recreation Department, with additional support by Nan Fung Life Sciences Real Estate. Refreshments will include holiday beverages from H.P. Hood and Cafe Nero.

Santa Claus and The Grinch will arrive by boat with the Boston Police Harbor Unit at the Harborwalk and enter the park to switch on the lights. Entertainment will be provided by students of Berklee School of Music, Sofia Sunshine and duo Skye and Jo. In addition, the Boston Park Rangers will be on hand, along with a fire truck from the Boston Fire Department. Visitors can also enjoy holiday arts



An aerial view of the ship at Martin's Park alight last year.

and crafts led by a local artist.

Other 2025 holiday celebrations hosted by the Boston Parks and Recreation Department include the Copley Square Tree Lighting on Monday, December 1 at 4 p.m. and the Boston Common Tree

Lighting on Thursday, December 4, beginning at 6 p.m. This year's tree is a 45-foot-tall white spruce donated by Ronald and Claire Feener of Lunenburg County, Nova Scotia. The celebration will be immediately followed by the

lighting of the trees on Commonwealth Avenue Mall at Arlington Street and Commonwealth Avenue at 8:15 p.m.

Visit [boston.gov/holiday-lights](http://boston.gov/holiday-lights) for more information about the season's festivities.

## MBTA lays out service updates for winter 2026

Special to the Patriot-Bridge

The Massachusetts Bay Transportation Authority (MBTA) today announced its service updates which go into effect on Sunday, December 14.

Among these updates, 21 bus routes in total will increase frequency with 10 of those being upgraded to operate every 15 minutes or better. This is part of the larger Better Bus program aimed at improving the bus routes system wide.

Riders are strongly encouraged to check schedules in advance and to use the MBTA's Trip Planner as well as the MBTA Go app to view live information.

### Subway Updates

Orange Line: Trip time and reliability will improve due to operational improvements to reduce congestion at Oak Grove

Blue Line: Time between trips may shift by a few minutes midday between 12pm and 2pm to allow for maintenance and inspections. This will lead to improved reliability and predictability of passenger service.

### Bus Service Improvements

Routes 32, 39, 57, 66, 71, 73, 77, SL1, SL3, SL5: These 10 routes will become Frequent Bus Routes with service every 15 minutes or better every day during most operating hours.

Route 64: To improve connectivity and consistency, weekend

trips will no longer deviate to University Park in Cambridge, but will extend to Kendall/MIT seven days a week. University Park can still be reached by traveling to/from the bus at Central Square (inbound River Street, outbound Western Ave). Route frequency will also improve.

Routes 112 and 114: The bus stop located at the Chelsea Market Basket has moved from the east side of the store to the west side closer to the Carter St. side of the building due to building construction.

Route 7: Frequency will increase to alleviate crowding during AM and PM peak periods.

Routes 9, 21, 26, 45, 64, 69, 83, 116, 215, 225, 245: Frequency will increase.

For other minor runtime, reliability, and trip shift changes see [mbta.com](http://mbta.com) for schedules.

### Ferry Schedule Changes

Hingham/Hull Ferry weekday service continues to operate year-round. There is no weekend service throughout the winter.

Charlestown Ferry weekday and weekend service continues to operate year-round.

East Boston Ferry weekend and weekday will operate this season through November 30, 2025.

Lynn Ferry, Winthrop Ferry, and Quincy Ferry weekday service continues to operate through November 26, 2025. There is no weekend service throughout the winter on these routes.

The full lists of upcoming

changes for winter 2026 will soon be available at [mbta.com](http://mbta.com).

For more information, connect with the T on X @MBTA, Facebook /TheMBTA, Instagram @theMBTA, Threads @thembta, or TikTok @thembta.

The Massachusetts Bay Transportation Authority (MBTA) opened America's first subway tunnel in 1897, pioneering public transportation in the United States. Today, the MBTA is one of the largest public transit systems in the country, operating an extensive network of subway, bus, Commuter Rail, ferry, and paratransit services across 176 cities and towns. The MBTA is undergoing a transformative period, focusing on cultivating a culture of safety and excellence, modernizing infrastructure, and improving reliability and accessibility. Current priorities include accelerating critical infrastructure repairs, expanding accessibility, and reducing emissions. The MBTA is committed to providing dependable, frequent, and accessible service that riders can rely on while supporting the region's

economic vitality. Through initiatives like the unprecedented Track Improvement Program, Bus Network Redesign, and Rail Vision, the MBTA aims to connect communities and improve riders' daily experiences and trips. For questions or assistance, riders are encouraged to contact the MBTA

Customer Center at 617-222-3200. Members of the press are encouraged to contact [mediarelations@mbta.com](mailto:mediarelations@mbta.com). For the latest updates on MBTA services, projects, and initiatives, visit MBTA.com or follow @MBTA on social media.

ADVERTISE IN THE  
PATRIOT-BRIDGE  
CALL 781-485-0588

*The weather outside is frightful... But your budget can still be delightful!*

Secure your ad space, don't be slow!

This low price will help your sales grow!

Clients & customers are a CLICK away when you advertise online

Call (781) 485-0588 or shoot us an email

160PX BY 300PX BLOCK ADS \$200/MO

PROPORTIONAL AD SPACE

THE INDEPENDENT NEWSPAPER GROUP

REVEREJOURNAL.COM • WINTHROPTRANSCRIPT.COM  
EVERETTINDEPENDENT.COM • EASTTETIMES.COM • CHELSEA RECORD.COM  
CHARLESTOWNBRIDGE.COM • BEACONHILLTIMES.COM • THEBOSTONSUN.COM  
NORTHEASTREGIONALREVIEW.COM • JAMAICAPLAINGAZETTE.COM • MISSIONHILLGAZETTE.COM



CHARLESTOWN GIRLS SOFTBALL LEAGUE HOLDS AWARDS CEREMONY

DEREK KOUYOUMJIAN PHOTOS



Awards for the 14U Spring Team: Unsung Hero Award to Ryleigh Jones MVP Award to Camryn Collier, Blue Diamond Award to Lilliana Telesford.



Candidates for the Joseph D Hayes Award are introduced by his son Jim Hayes. For 37 years, each coach writes a letter promoting a player that embodies team spirit, heart, and ability.



Awards for the 12U Spring Navy Team: Most Improved Player Award to Anna Hawkins, Sportsmanship Award to Julia Fenn, Unsung Hero Award to Scout Hammil, MVP Award to Kathryn Lynch, Blue Diamond Award to Emma Healey.



Members of Hayes Family: Jane Porter, Janet Lawton, and Jim Hayes with the recipient of the Joseph D Hayes Award for 2025 Scout Hammil who was nominated by her Coach Mike Lynch.



Keynote speaker, Tufts University softball player and instructor Michelle Adelman. "Charlestown Softball is such an established program...the culture that you guys have created here is truly something special."



Awards for the 12U Spring Columbia Team: Blue Diamond Award to Mia Mabardi, MVP Award to Taelyn Donahue, Unsung Hero Award to Stella Braga, Sportsmanship Award to Teagan Dyer, Most Improved Player Award to Katerl Santilli.



Members of the Championship 14u Winter Team.



Awards for the 8U Spring White Team: Most Improved Player Award to Claire Keighery, Unsung Hero Award to Leila Brett, and MVP Award to Molly Fenn



Awards for the 10U Summer Team: Sportsmanship Award to Augusta Fry, Blue Diamond Award to Brielle Deferiere, Most Improved Player to Abigail Bressler, MVP Brielle Cherie.



12u Fall Most Improved Player Award To Cora Cottam, Sportsmanship Award to Brielle Deferiere, Unsung Hero Award to Averie Morales, MVP Award to Scout Hammil, Blue Diamond Award to Ava Dietz.



Awards for the 8U Fall Team: Blue Diamond Award to Nora Talty, Unsung Hero Award to Riley Pinch, MVP Award to Ava Urquhart.



Awards for the 8U Spring White Team: Most Improved Player Award to Claire Keighery, Unsung Hero Award to Leila Brett, and MVP Award to Molly Fenn.



CHARLESTOWN GIRLS SOFTBALL LEAGUE HOLDS AWARDS CEREMONY

DEREK KOUYOUMJIAN PHOTOS



Awards for the 14U Summer Team: Most Improved Player Award to Skyler Martin, Sportsmanship Award to Cora Cottam, Unsung Hero Award to Caroline Bresler, MVP Award to Camryn Collier, Blue Diamond Award to Liliana Telesford.



Players in the league who have played over 3 seasons.



Awards for the 10U Spring White Team: Unsung Hero Award to Brynlee Kielbasa, Sportsmanship Award to Sarra Martin, Most Improved Player Award to Sophia Doucette, Blue Diamond Award to Abigail Bressler, MVP Award to Zoe Gibbons.



Members of Hayes Family: Jane Porter, Janet Lawton, and Jim Hayes (also their Judy Hayes who is not in the photo) congratulate the nominees Mia Lombardi who was nominated by her Coach Jenna Passamonti and Dora Hammil who was nominated by her Coach Billy Nugent and the recipient of the Joseph D Hayes Award Scout Hammil who was nominated by her Coach Mike Lynch.



Keynote speaker, Tufts University softball player and instructor Michelle Adelman with Charlestown players Ryleigh Jones, Maya Castro, Maya Castro, and Camryn Collier.



Members of the Championship 14U Summer Team.



18U Fall Most Improved Player Award to Emma Healey, Sportsmanship Award to Maya Castro, Unsung Hero Award to Lillian Fucile, MVP Award to Camryn Collier, Blue Diamond Award to Kathryn Lynch.



Awards for the 10u Spring Columbia Team: Blue Diamond Award Payton King, Most Improved Player Award to Ava Dietz, Sportsmanship Award to Liza Oh, Unsung Hero Award to Brielle Chery, MVP Award to Judith Hart.

Discover  
craft  
artisans  
community  
classes  
NBSS

Open House Dec. 5-6  
[nbss.edu/openhouse](http://nbss.edu/openhouse)

NORTH  
BENNET ST  
SCHOOL



Charlestown Patriot-Bridge Pick-Up Locations	
Newtowne Market .....	87 Medford St.
Community Center .....	255 Medford St.
365 Convenience Store .....	275 Medford St.
Annas Café .....	275 Medford St.
Jenny's Pizza .....	320 Medford St.
Waverly Café .....	229 Bunker Hill St.
Bunker Hill Liquors.....	200 Bunker Hill St.
Kennedy Center .....	55 Bunker Hill St.
McCarthy's Liquors.....	9 Moulton St.
Bunker Hill Cleaners .....	Moulton St.
Police Station .....	20 Vine St. Hayes Sq.
Santander Bank .....	437 Rutherford Ave.
7/11 Store .....	269 Main St.
Zelma Lacey House.....	9 W School St.
Gatehouse Apartment.....	75 W School St.
Ace Hardware .....	Bunker Hill Mall
CVS .....	Bunker Hill Mall
Citizens Bank.....	Bunker Hill Mall
Whole Food Market .....	Bunker Hill Mall
MGH Health Care Center .....	73 High St.
7/11 Store .....	Thompson Sq.
Charlestown Liquors .....	Thompson Sq.
Starbucks.....	Thompson Sq.
Cambridge Savings .....	Thompson Sq.
Warren Tavern.....	2 Pleasant St. & Main St.
Constellation Wharf Condos	1 Constellation Wharf
Harborview .....	250 First Ave.
Basilica.....	106 13th St.
Anchorage Apartment .....	103 13th Ave.
Parris Landing .....	42 Eighth St.
Tuttles Clevergreen Cleaners .....	197 Eighth St.
Flagship Wharf .....	197 Eighth St.
Style Café.....	197 Eighth St.
Building 104 .....	104 First Ave.
Building 110 .....	110 First Ave.
MGH Institute .....	26 First Ave.
7/11 Store .....	1 First Ave.

### NORTH WASHINGTON STREET BRIDGE

## CONSTRUCTION UPDATE

The Construction Look-Ahead through December 6 for the North Washington Street Bridge is as follows:

#### Scheduled Work

- Various minor project close-out activities
- Work Hours
  - Monday through Friday from 6 a.m. to 6 p.m.
  - Saturday from 6 a.m. to 2 p.m.

#### Travel Tips

For everyone using the east sidewalk of the new bridge, please help share the space: walk to the right, walk bikes, and be mindful of people coming from both directions, if walking in a large group.

Drivers should take care to pay attention to all signage and move carefully through the work zone. Police details, lane markings, temporary barriers, traffic cones, signage, and other tools will be used to control traffic and create safe work zones.

The Tudor Wharf Walkway (under the bridge next to the water in Paul Revere Park) will be intermittently closed for safety during construction operations, with access provided via the Water Street underpass. The Boston Harborwalk under the bridge and eastern/harborside bridge sidewalk remain closed until rebuilt.

The contractor is coordinating with the TD Garden and local police to provide awareness and manage traffic impacts during events. For your awareness, the following TD Garden events are scheduled during this look-ahead period:

- Bruins: November 28 at 1 p.m., November 29 at 7 p.m., December 4 at 7 p.m., and December 6 at 7 p.m.
- Celtics: December 5 at 7 p.m.
- December 3 at 8:30 p.m.

How can I find more information?

Stay up-to-date and informed by following @MassDOT on X, formerly known as Twitter, and Mass 511 for real-time updates, visiting the project website, or emailing us with any questions.

You can also sign up to receive project updates via email by clicking this link.

Project website: [Mass.gov/north-washington-street-bridge-replacement](#)

Project email: [NorthWashingtonStreet@dot.state.ma.us](#)

### MUSEUM (from pg. 6)

and builds community among musicians, and supports them by presenting them in new endeavors and collaborations. His programming also frequently draws on the history of the Gardner Museum, featuring instruments from the Museum's collection and music by composers who were associated with its founder. In honoring Isabella Stewart Gardner's musical legacy, Music at the Gardner remains strongly committed to broadening the repertoire of music presented to include previously overlooked and marginalized composers as well as performers of all backgrounds.

Ticketing Information at [box-office@isgm.org](#).

The Isabella Stewart Gardner Museum invites you to escape the ordinary in a magical setting where art and community come together to inspire new ways of envisioning our world. Embodying the fearless legacy of its founder, the Museum offers a singular invitation to explore the past through a contemporary lens, creating meaningful encounters with art and joyful connections for all. Modeled after a Venetian palazzo, unforgettable galleries surround a luminous Courtyard and are home to masters such as Rembrandt, Raphael, Titian, Michelangelo, Whistler, and Sargent. The Renzo Piano wing provides a platform for contemporary artists, musicians, and scholars and serves as an innovative venue where creativity is celebrated in all of its forms.

Isabella Stewart Gardner Museum • 25 Evans Way, Boston, MA 02115 • Hours: Open Weekends from 10 am to 5 pm, Weekdays from 11am to 5 pm and Thursdays until 9 pm. Closed Tuesdays. • Admission: Adults \$22; Seniors \$20; Students \$15; Free for members, children under 18, everyone on their birthday, and all named "Isabella" • \$2 off admission with a same-day Museum of Fine Arts, Boston ticket • For information 617 566 1401 • Box Office 617 278 5156 • [www.gardnermuseum.org](#)

Music at the Gardner is supported by Nora McNeely Hurley / Manitou Fund. The Museum thanks its generous concert donors: The Coogan Concert in memory of Peter Weston Coogan; Fitzpatrick Family Concert; James Lawrence Memorial Concert; Alford P. Rudnick Memorial Concert; David Scudder in memory of his wife, Marie Louise Scudder; Wendy Shattuck Young Artist Concert; and Willona Sinclair Memorial Concert. The piano is dedicated as the Alex d'Arbeloff Steinway. The harpsichord was generously donated by Dr. Robert Barstow in memory of Marion Huse, and its care is endowed in memory of Dr. Barstow by The Barstow Fund. Music at the Gardner is also supported in part by Barbara and Amos Hostetter, Nicie and Jay Panetta, and the Massachusetts Cultural Council, which is supported by the state of Massachusetts and the National Endowment for the Arts.

## Real Estate Transfers

BUYER 1	SELLER 1	ADDRESS	PRICE
Pugliares, Benjamin J	Lia, Ryan V	107 Baldwin St	\$1,825,000
115 High Street LLC	Connors Richard C A Est	115 High St	\$1,650,000
Danielson, Colleen	Shah, Molik	236 Bunker Hill St #3	\$872,500
Jones, Tristan K	Macdonald, Douglas C	297 Bunker Hill St	\$2,500,000

253 Main St. • Charlestown • 617-241-5566

[www.c21elite.com](#)

Sales • Rentals • Free Market Analysis

Certified Buyer Agents



## Trinity Financial named MassNAHRO 2025 Development Partner of the Year

Special to the Patriot-Bridge

Trinity Financial—long recognized for its work revitalizing public housing and strengthening neighborhoods across Boston—has been named the 2025 Development Partner of the Year by the Massachusetts chapter of the National Association of Housing and Redevelopment Officials (MassNAHRO).

The recognition comes during a milestone year for the company's leadership: Trinity's principals, James Keefe and Patrick Lee, were also recently presented with the Norman B. Leventhal Excellence in City Building Award for their contributions to creating vibrant, inclusive neighborhoods across Boston.

For East Boston residents, this honor underscores Trinity's leadership in delivering one of the neighborhood's most significant housing investments in decades: Overlook Terrace at Orient Heights.

Formerly a distressed 15-acre state public housing site, Overlook Terrace was transformed into a 331-unit, state-of-the-art, sustainable residential community shaped through several years of resident and community engagement. The redevelopment replaces

aging units with modern, energy-efficient homes and introduces safer streets, improved pedestrian connections, and high-quality open spaces planned around resident needs.

The project has also earned major industry acclaim. On May 21, 2025, Overlook Terrace received a National Recognition Award from the American Council of Engineering Companies (ACEC). It also received the ACEC/MA 2025 Silver Award for Engineering Excellence, along with achieving both LEED certification and Enterprise Green Communities Certification—demonstrating its commitment to resilient, environmentally responsible design.

"Trinity Financial's work represents the very best of what public-private collaboration can achieve," said Peter Proulx, president of the Massachusetts Chapter of the National Association of Housing and Redevelopment Officials (MassNAHRO). "Their commitment to residents and the very personal nature they bring to their projects make a real difference in communities across the Commonwealth."

MassNAHRO cited Trinity's resident-centered approach at Overlook Terrace as one of the key

reasons for selecting the firm, noting that the redevelopment serves as a model for how aging public housing can be upgraded while respecting and preserving the community that has long called it home.

"MassNAHRO plays an essential role in strengthening public housing agencies and advocating for residents across the state," said Mike Lozano, Vice President of Development at Trinity Financial. "We're honored to be recognized by an organization whose mission so closely reflects our own—building communities that empower residents, promote inclusion, and advance housing as a basic human right."

In addition to its work in East Boston, Trinity has led major affordable and mixed-income housing investments across the city and state. But Overlook Terrace stands out as a once-in-a-generation effort that replaced outdated public housing with modern, sustainable homes—while ensuring that longtime East Boston families could remain in the neighborhood.

The 2025 Development Partner of the Year Award was presented at MassNAHRO's Annual Conference & Exhibition recently, in Norwood, Massachusetts.

### PROJECT BREAD (from pg. 7)

reliable access to healthy food.

"Eva and Sylvia each bring tremendous experience and leadership that will strengthen Project Bread's work to end hunger statewide," says Erin McAleer, CEO of Project Bread. "Eva's expertise in policy, systems change, and inclusive civic engagement, combined with Sylvia's deep understanding of health care and the social determinants of health, will help us advance sustainable, systemic solutions to food insecurity. We're thrilled to welcome both of them to the board."

Millona brings extensive experience bridging nonprofit, government, and philanthropic sectors. Most recently, she served as Assistant Secretary for Partnership and Engagement at the U.S. Department of Homeland Security during the Biden-Harris Administration and previously as Chief of the Office of Citizenship, Partnership and Engagement at U.S. Citizenship and Immigration Services.

Prior to her federal service, Millona spent over 13 years as President and CEO of the Massachusetts Immigrant and Refugee Advocacy (MIRA) Coalition, co-founded the National Partnership for New Americans in 2010,

and co-founded and co-chaired the Massachusetts Business Immigration Coalition in 2018.

"Hunger is one of our most basic needs—universal to people regardless of where they were born," says Millona. "Project Bread's work at the intersection of policy, prevention, and partnership resonates deeply with my own approach to systems change. I look forward to contributing to the organization's mission to eliminate hunger statewide."

A native of Albania, Millona previously served as the youngest district judge ever appointed to Tirana's District Court. She holds a law degree from the University of Tirana and a Master's degree in political science from Clark University.

Perry brings over two decades of clinical and leadership experience to the board. She currently serves as a Nurse Practitioner at Mass General Brigham, where her clinical interests include breast surgical oncology and internal medicine. She also advocates for clinician well-being and patient experience, serving on the MGH Workplace Well-being Collaborative and Center for Professional Well-being Advisory Board.

A certified health and well-being coach, Perry teaches lifestyle medicine to breast cancer patients and brings valuable nonprofit governance experience through her service on the Wide Horizons for Children Board and as a member of the MGH Institute of Health Professions President's Council.

"Health care providers see every day how food insecurity affects people's health and their ability to thrive," says Perry. "Project Bread's commitment to addressing hunger through systemic solutions aligns with what I see in medicine—lasting change requires addressing root causes. I'm honored to join this team and help bridge health care and food security to improve outcomes for families across Massachusetts."

Perry earned her Bachelor's degree in History from Yale College, Master of Science in Health and Social Behavior from the Harvard School of Public Health, Master of Science in Nursing from the MGH Institute of Health Professions, and Doctor of Nursing Practice from the University of New Hampshire.

For more information, visit: [www.projectbread.org](http://www.projectbread.org).

• Revere • Everett • Winthrop • Lynn • East Boston • Chelsea • Charlestown

**Independent Newspaper Group**

781-485-0588  
Fax: 781-485-1403  
Ext 102  
E-Mail Your Ad To: [classified@reverejournal.com](mailto:classified@reverejournal.com)

**Classified**

More Than 100,000 Readers Each Week

7 COMMUNITIES

REAL ESTATE  
Sales • Rentals  
Land • Commercial  
RECRUITMENT  
Professional • Medical  
General • Services  
• Auto Sales • Yard Sales  
• Miscellaneous

**Do You Want To Sell Your Home?**

**Our Advertisers have clients waiting to buy!**

List your property with one of the fine realtors who advertise regularly in the...

**OBITUARIES**

All obituaries and death notices will be at a cost of \$195.00 per paper.

Includes photo.No word Limit.

Please send to [obits@reverejournal.com](mailto:obits@reverejournal.com) or call 781-485-0588

### BUSINESS DIRECTORY

**McHugh Electric**

Licensed & insured  
Complete electrical services  
[www.johnpmchughelectric.com](http://www.johnpmchughelectric.com)  
[jmchugh447@gmail.com](mailto:jmchugh447@gmail.com)  
617-320-7703

**Ryan Masonry**

Chimneys • Fireplaces  
Cellar Floors • Restoration  
French Drains • Repointing

Free Estimates, Lic. & Ins.

Local References  
Phil • 617-230-3490

PLEASE PATRONIZE  
OUR ADVERTISERS

**JOHN J. RECCA PAINTING**

Commercial/Residential  
Interior/Exterior  
Fully Insured  
Quality Work  
Reasonable Rates  
Free Estimates

781-241-2454

[reccapainting@hotmail.com](mailto:reccapainting@hotmail.com)

ADVERTISE IN THE  
PATRIOT-BRIDGE  
CALL 781-485-0588



CITY PAWS

Thanks to those noses

By Penny & Ed Cherubino

Have you considered the ways dogs, with their fantastic sense of smell, serve humankind?

Writing in *Psychology Today*, Jessica Pierce, Ph.D., explained, “The sensory world of dogs overlaps with ours, but also extends well beyond ours in some areas. Smell is the most obvious sensory modality in which dogs excel, having a far more powerful nose and a much larger area of the brain dedicated to processing olfactory information than humans.”

“This keen sense of smell enables service dogs to alert their humans to an oncoming seizure, change in blood sugar level, or an anxiety attack. They learn to differentiate between a person’s familiar scent and the change that precedes an episode.” Recently, we were amazed to learn that a guide dog can lead its person to the appropriate restroom in a new place by identifying male and female hormones.

**Medical Alert Dogs**

In the medical field, a dog’s sense of smell can save lives. Junior Internal Medicine reported that, “Researchers have found that diseases can alter the body’s scent signature, releasing volatile organic compounds (VOCs) through

sweat, breath, saliva, or skin that dogs can be trained to identify.” In disease-detection trials, dogs have been used to detect cancers, including prostate, lung, breast, and colon cancers; COVID-19; bacterial infections; Parkinson’s disease; and other neurodegenerative disorders.

**Medical Assistant Dogs**

Dogs can recognize when a person is about to have a specific medical emergency. Professional trainers work with medical assistance dogs as they learn to alert a person, help them get to the ground in the recovery position, protect them, retrieve medication, summon help, or activate a medical alert.

Seizures, narcolepsy, diabetes, and POTS are some of the conditions for which alert dogs can predict an episode, help the person reach a safe place, and then provide protection. In some cases, these animals can alert a person in time to take preventive medication.

**Public Safety Dogs**

Most police departments have K-9 teams on call. Each team consists of a human officer and a highly trained dog. In smaller departments, these may be multi-purpose teams. Larger departments have dogs trained to perform specific



Search-and-rescue dogs are just one way Service Dogs answer the call when needed.

tasks. Dogs are used proactively to scan an area or the people about to enter it, for explosives or other dangerous materials. Fire Departments also use dogs in arson investigations.

If you listen to first responder communications on a scanner, you hear regular calls for K-9 assistance. Officers on the scene of an incident may need a dog to help find explosives, drugs, or a gun. One Boston Police dispatcher has a short-hand response of “sending the puppy.” This phrase is ironic, since that “puppy” could be

a highly trained weapon used to find, hold, and release a suspect on command.

Often, the human partner can have someone surrender simply by announcing, “Come out with your hands up, or I’ll send the dog.” Criminals who are not intimidated by armed police are afraid of K-9 officers. And, yes, these dogs are considered police officers. A person who hurts a police canine will be charged with assaulting a law enforcement officer.

Finally, search and rescue dogs respond to all types of emergen-

cies, from disaster scenes to lost children. Some search for the living, while others recover bodies. While some of these are working with first responders, others are volunteers, trained by guardians who give their time to help others.

As you sit together on Thanksgiving Day, raise a glass to all the dogs who help people in so many ways.

*Do you have a question or topic for City Paws? Email Penny@BostonZest.com with your suggestion.*

BLO presents ‘Must the Winter Come So Soon?’ at the Boston Public Library

Special to the Patriot-Bridge

The Boston Public Library and Boston Lyric Opera (BLO) are joining forces to present a spe-

cial Opera Night titled "Must the Winter Come So Soon?" on Thursday, December 4, from 6:00 p.m. to 7:30 p.m.

The free event, which welcomes all audiences—no prior

opera experience necessary—aims to bring warmth, light, and connection to the cold winter season through music. The concert and conversation will be held in the Rabb Lecture Hall at the Boston

Public Library Central Branch (700 Boylston Street, Boston, MA 02116).

Program Highlights  
The program will feature the

moving and expressive music of 20th-century American composer Samuel Barber, celebrating music's power to transform difficult emotion into beauty. The evening will also honor Boston’s legacy as a hub for revolutionary American artistry and musical innovation.

Featured performances will include:

- Excerpts from Barber’s opera *Vanessa*.
- Luminous art songs.
- A string quartet performance.
- An engaging audience Q&A.

The featured artists include:

- Josie Larsen (soprano)
- Mary Kray (mezzo-soprano)
- Brendon Shapiro (pianist)
- String Quartet: Sarah Atwood (violin), Hikaru Yonezaki (violin), David Feltner (viola), and Melanie Dyball (cello)

While registration is welcome, it is not required to attend this free public event. You can register online at <https://tinyurl.com/ING-BPLOpera>.

JUST SOLD AT  
THE BASILICA!

106 13th Street #114  
2 bedrooms | 1 bathroom | 872 sq ft  
Sale Price: \$500,000

JUST RENTED AT  
SHIPWAY PLACE!

28 Shipway Place  
2 bedrooms | 2.5 bathrooms | 1,473 sq ft | Private Balcony  
2 parking spaces  
Rented At: \$6,500/month


UNDER AGREEMENT AT  
FLAGSHIP WHARF!

197 8th Street #PH212  
2 bedrooms | 2.5 bathrooms | 2 private balconies  
1,657 sq ft | 2 Self- Parking Spaces  
Last Ask: \$1,799,000

Representing buyers, renters and sellers. Contact us for more information.

Karen Colombosian & Myles Couyoumjian  
(617) 519-6453  
Karen.Colombosian@CBRealty.com

the  
DAVID  
GREEN  
GROUP  
AT COLDWELL BANKER REALTY

 GLOBAL  
LUXURY  
COLDWELL BANKER REALTY